



COMMUNITY LAND TRUST

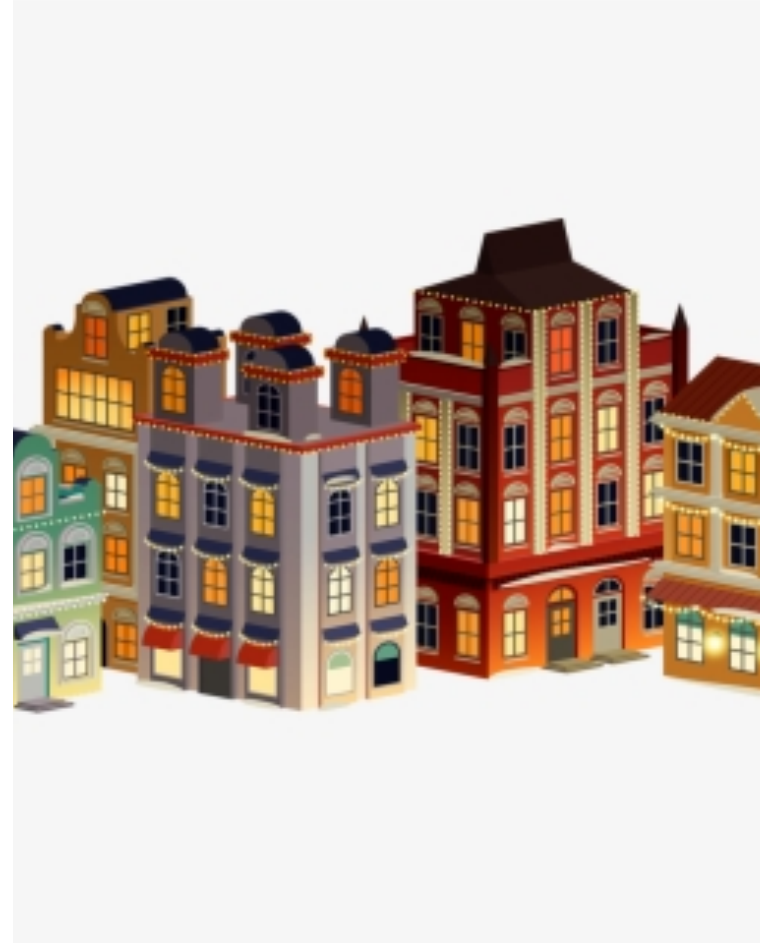
- **Provides** affordable housing in perpetuity and individuals the opportunity to attain homeownership at an affordable amount, with an equitable return upon sale. Homebuyers determine if it is most important, for an affordable place to live preventing displacement
- **Promotes** financial stability-reducing cost burden, and individual wealth building
- **Long-term** connection with the organization which ensure the success of program services



COMMUNITY LAND TRUST

Properties can be:

- Green Spaces
- Commercial Spaces
- Agriculture
- Rentals
- Lease Purchase Units
- Ownership, Condos-
Townhomes and Single-
Family Units



NATURE OF SERVICE

A healthy nonprofit is necessitated by the commitment of the Board led by the President/Chair

THE BOARD MUST:

- **Believe**-in the mission and goals of the organization
- **Role**-understand that every board member serves to grow the organization, evaluate our successes and shortfalls
- **Rules**-ensure that all requirements, guidelines and laws relative to program services are followed
- **Self**-place service above self on behalf of others
- **Transparent**-no hidden agendas

KNOW THAT:

- **Credit**-does not matter who gets it, what matters most is the impact of the work we do on behalf of the households we serve
- **Relationships**-are built through service rendered on behalf of others
- **Respect**-we set aside all differences that may cause division





WE COLLECTIVELY

- **PROVIDE** : affordable housing opportunities for very-low to moderate income households through ownership, lease purchase and rentals. Upward mobility for the household we serves, enabling them to build individual wealth
- **SUSTAIN**: program services to ensure access to quality housing by expanding existing housing stock, and leveraging public-private resources
- **CULTIVATE**: *an environment that builds pride and equality*
- **REMAIN**: transparent, true to our mission and financially accountable



“THERE IS NO PLACE LIKE HOME”

INFILL HOUSING



ATLANTIC PARK SQUARE 25 Single Family Units



WORK FORCE HOUSING



COREY JONES ISLES -10 new

COMMUNITY LAND TRUST

“STEWARDSHIP OUTCOMES”

- ❑ Financial Stability, creating a “SENSE of PLACE” wherein homes remain affordable for residents to progress through life
- ❑ Safe and Secure mortgage financing
- ❑ Relationships nurtured with homeowners through pre-post purchase education
- ❑ The Community benefit from a *PERMANENT* stock of quality housing with t stabilizing neighborhoods, and minimizing slum and blight
- ❑ Managing and Monitor public investments to ensure long-term benefits
- ❑ Intervention and Backstopping homeowners to prevent foreclosures

1
Franklin County
Community
Development & Trust Consortium CLT

2
Tallahassee
Lender's
Consortium CLT

3
City
of Jacksonville
CLT

4
City
of Gainesville
CLT

5
Communities that
Care Community
Land Trust

6
Habitat for
Humanity of
Marion County

10
City of
Tampa
CLT

11
Hillsborough
County
CLT

12
Community
Housing Trust
of Sarasota

17
Community
Housing and
Resources
(Sanibel)

18
Collier
County
CLT

19
ROOF
Housing Trust
(Statewide)

25
Neighborhood
Renaissance

26
Manatee
County CLT

27
Marion County
Housing Finance
Authority

7
Hannibal Square
Community
Land Trust

8
Housd (Regional
Housing Trust -
Orlando Metro)

9
Bright
Community
Trust

13
City of
Port St. Lucie
CLT

14
CLT of Palm
Beach County &
The Treasure Coast

15
Delray Beach
Community
Land Trust

20
Struggle for
Miami's Affordable &
Sustainable Housing
(SMASH CLT)

21
Florida Keys
Community
Land Trust

22
St. Lucie
Habitat for
Humanity

28
Volusia
County

29
St. John's
Housing
Partnership

30
Nassau
County
Chamber of
Commerce

23 Pensacola

Tallahassee **2**

1

31
Heartfelt Florida
Housing of South
Palm Beach Co.
Community
Land Trust

32
PORCH
Peace River
Community
Housing Partners

30
3
Jacksonville

4
5
6
27
29

7
8
Orlando

9
Tampa

10
11
Saint Petersburg

12
13
14
15
16
Palm
Beaches

17
18
19
Fort Lauderdale

20
Miami



Community Land Trusts Throughout Florida



Newly Formed
or Organizing



Established
CLTs



florida
community land trust
INSTITUTE